

Series image - Reference only

EU RoHS

ELV and RoHS Compliant

China RoHS



Search Parts in this Series

88759 Series

Part Number: **0887685400**

Status: **Active** **Overview:** **DMS-59®**

Description: 1.27mm (.050") Pitch DMS-59® to DVI-I(F)+VGA(F) Adapter Cable Assembly, 0.20m (7.87") Length

General

Product Family	Cable Assemblies
Series	<u>88759</u>
Connector to Connector	DMS-59™ to DVI-/VGA
Overview	<u>DMS-59®</u>
Product Name	DMS59®

Physical

Cable Length	0.20m (7.87")
Circuits (Loaded)	59
Color - Resin	Black (D2)
Color - Resin	Natural
Gender	Male-Female
Lock to Mating Part	Yes
Material - Metal	Aluminum
Material - Metal	Phosphor Bronze
Material - Metal	Steel
Material - Plating Mating	Gold
Material - Plating Mating	n/a
Material - Plating Termination	Tin
Material - Resin	High Temperature Thermoplastic
Material - Resin	Low Density Polyethylene
Packaging Type	Bag
Pitch - Mating Interface (in)	0.050 In
Pitch - Mating Interface (mm)	1.27 mm
Plating min: Mating (uin)	2
Plating min: Mating (uin)	30

Plating min: Mating (uin)	75
Plating min: Mating (um)	0.05
Plating min: Mating (um)	0.75
Plating min: Mating (um)	1.875
Plating min: Termination (uin)	100
Plating min: Termination (uin)	150
Plating min: Termination (um)	2.5
Plating min: Termination (um)	3.75
Single Ended	No
Termination Interface: Style	N/A
Termination Interface: Style	Through Hole
Wire Insulation Diameter	N/A
Wire Size AWG	32
Wire/Cable Type	Round

Electrical

Current - Maximum	1.000 Amp
Impedance	100 ohms
Shielded	Yes
Voltage - Maximum	30VAC

Material Info

Reference - Drawing Numbers

Sales Drawing	SD-88744-098
---------------	--------------

7 6 5 4 3 2 1

E

E

D

D

C

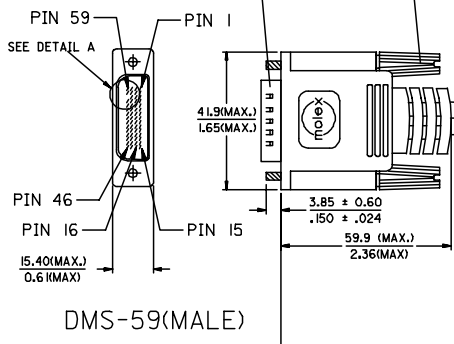
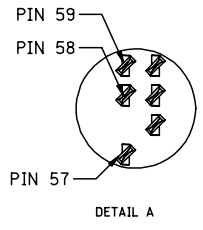
C

B

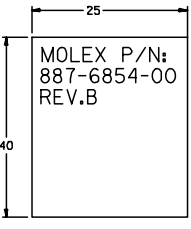
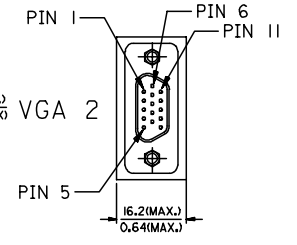
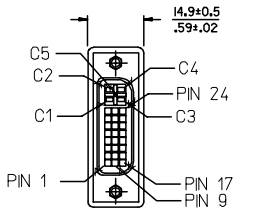
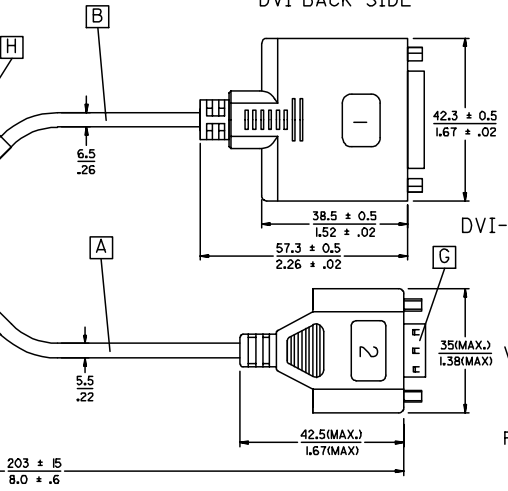
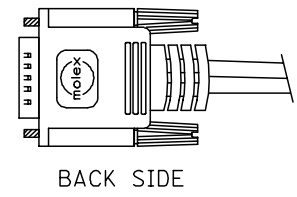
B

A

A



SEE DETAIL B



ENTER DESCRIPTION EC NO: DG2006-0186 DRWN:PDAI 2006/03/09 CHKD: 2006/03/09 APPR:TKAN 2006/03/10	QUALITY SYMBOLS ▽=0 ◻=0	GENERAL TOLERANCES (UNLESS SPECIFIED)		DIMENSION STYLE MM/IN	SCALE ---	DESIGN UNITS METRIC	THIRD ANGLE PROJECTION	
		mm INCH	DRAWN BY PDAI	DATE 2006/03/07	TITLE DMS59(M) TO DVI-I(F)+ VGA(F) ADAPTE CABLE			
		4 PLACES ± --- ± --- 3 PLACES ± --- ± --- 2 PLACES ± --- ± --- 1 PLACE ± --- ± ---	CHECKED BY ZXDENG	DATE 2006/03/07	MOLEX INCORPORATED			
		ANGULAR ± ---°	APPROVED BY BORON	DATE 2006/03/07	MATERIAL NO. 887685400	DOCUMENT NO. SD-88744-098	SHEET NO. 1 OF 2	
	DRAFT WHERE APPLICABLE MUST REMAIN WITHIN DIMENSIONS	SIZE A 4	THIS DRAWING CONTAINS INFORMATION THAT IS PROPRIETARY TO MOLEX INCORPORATED AND SHOULD NOT BE USED WITHOUT WRITTEN PERMISSION					

6

5

4

3

2

1

WIRING DIAGRAM:

SHIELD	SHIELD	GROUND
C5	PIN 1,4,59	GROUND(RED, BLUE, GREEN)
C4	PIN 56	VGA1_HSYNC
C3	PIN 3	VGA1_BLUE
C2	PIN 58	VGA1_GREEN
C1	PIN 2	VGA1_RED
PIN 23	PIN 31	DVII_TXC+
PIN 24	PIN 32	DVII_TXC-
PIN 22	PIN 57	DVII_TXC RTN
PIN 19	PIN 33	DVII_TX0 RTN
PIN 18	PIN 29	DVII_TX0+
PIN 17	PIN 30	DVII_TX0-
PIN 16	PIN 36	DVII_HPD
PIN 15	PIN 54	GROUND
PIN 14	PIN 5	+5V
PIN 11	PIN 34	DVII_TX1 RTN
PIN 10	PIN 27	DVII_TX1+
PIN 9	PIN 28	DVII_TX1-
PIN 8	PIN 55	VGA1_VSYNC
PIN 7	PIN 7	DVII_DDC_DATA
PIN 6	PIN 6	DVII_DDC_CLOCK
PIN 3	PIN 35	DVII_TX2 RTN
PIN 2	PIN 25	DVII_TX2+
PIN 1	PIN 26	DVII_TX2-
DVI_I	DMS-59	CABLE FUNCTION

SHIELD	SHIELD	GROUND
PIN 15	PIN 10	VGA_SCL
PIN 14	PIN 51	VGA_VSYNC
PIN 13	PIN 50	VGA_HSYNC
PIN 12	PIN 9	VGA_SDA
PIN 10	PIN 52	GROUND(SYNCS)
PIN 9	PIN 11	+5V
PIN 8	PIN 12	GROUND(BLUE)
PIN 7	PIN 46	GROUND(GREEN)
PIN 6	PIN 15	GROUND(RED)
PIN 5	PIN 49	GROUND(ANALOG)
PIN 3	PIN 13	VGA_BLUE
PIN 2	PIN 47	VGA_GREEN
PIN 1	PIN 14	VGA_RED
VGA2	DMS-59	CABLE FUNCTION

NOTE:1. OVERMOLD SPECIFICATION

- 1.1 DMS-59 BOOT MOLDED WITH SNOW WHITE PVC RESIN, UL94V-0.
- 1.2 VGA BOOT MOLDED WITH BLUE PVC RESIN, UL94V-0.
- 1.3 DVI.I BOOT MOLDED WITH SNOW WHITE PVC RESIN: , UL94V-0.

2. MECHANICAL SPECIFICATION

- ▽ 2.1 CABLE SHOULD STAND THE PULL FORCE 89-11IN FOR 30 SECONDS WITH NO VISIBLE TERMINATION DAMAGE.
- 2.2 CABLE SHOULD PASS THE FLEX TEST IN 100 CYCLES AT EACH OF PLANES, PER EIA 364-41, CONDITION I.

3. CABLE ASSEMBLY ELECTRICAL SPECIFICATION

- ▽ 3.1 HI-POT VOLTAGE: 300VDC FOR 10ms.
 - ▽ 3.2 INSULATION RESISTANCE: 20 MEGA Ohms PER MIN.
 - ▽ 3.3 CONNECTION RESISTANCE: 2 Ohms MAX.
 - ▽ 3.4 DIFFERENTIAL LINES CHARACTERISTIC IMPEDANCE: 100±7 Ohms. @TDR 200 PSEC RISETIME.
 - ▽ 3.5 COAXIAL LINES CHARACTERISTIC IMPEDANCE: 75±10% Ohms @TDR 200 PSEC RISETIME.
 - 3.6 WRAP COPPER TAPE OVER BRAID, THEN CRIMP THE METAL CAN ON COPPER TAPE WITH 360°.
4. CONNECTOR PLATING: GOLD FLASH PLATING.
5. SCREW SPEC.: 4-40 UNC.

MATERIAL LIST:

H	LABEL	I
G	VGA D-SUB CONNECTOR(FEMALE)	1
F	DVI(F) JACK SCREW	2
E	DVI.I FEMALE CONNECTOR	1
D	LFH THUMB SCREW 4-40 UNC	2
C	DMS-59 PLUG ASSY(NATURE)	1
B	DVI-A/D CABLE BLACK	1
A	DVI ANALOG CABLE BLACK	1
ITEM	DESCRIPTION	QTY.

ENTER DESCRIPTION EC NO: DG2006-0186 DRWN: PDAI CHKD: APPR: TKAN	2006/03/09 2006/03/09 2006/03/10	QUALITY SYMBOLS ▽=0 ▽=0	GENERAL TOLERANCES (UNLESS SPECIFIED)		DIMENSION STYLE MM/IN		SCALE ---	DESIGN UNITS METRIC	THIRD ANGLE PROJECTION																	
	<table border="1"> <thead> <tr> <th></th> <th>mm</th> <th>INCH</th> </tr> </thead> <tbody> <tr> <td>4 PLACES</td> <td>±---</td> <td>±---</td> </tr> <tr> <td>3 PLACES</td> <td>±---</td> <td>±---</td> </tr> <tr> <td>2 PLACES</td> <td>±---</td> <td>±---</td> </tr> <tr> <td>1 PLACE</td> <td>±---</td> <td>±---</td> </tr> </tbody> </table>			mm	INCH	4 PLACES	±---	±---	3 PLACES	±---	±---	2 PLACES	±---	±---	1 PLACE	±---	±---	DRAWN BY PDAI		DATE 2006/03/07		TITLE DMS59(M) TO DVI-I(F)+ VGA(F) ADAPTE CABLE				
			mm	INCH																						
	4 PLACES		±---	±---																						
3 PLACES	±---	±---																								
2 PLACES	±---	±---																								
1 PLACE	±---	±---																								
ANGULAR ±---°		DRAFT WHERE APPLICABLE MUST REMAIN WITHIN DIMENSIONS		CHECKED BY ZXDENG		DATE 2006/03/07		APPROVED BY BORON																		
				MATERIAL NO. 887685400		DOCUMENT NO. SD-88744-098		SHEET NO. 2 OF 2																		

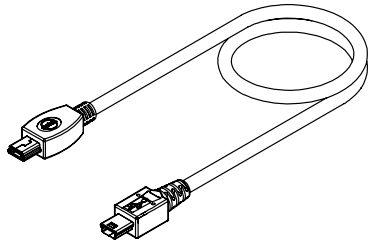
Universal Serial Bus (USB) On-The-Go (OTG) Shielded I/O Cable Assembly

88732

Standard USB A to Mini B

88753

Mini A to Mini B



Features and Benefits

- Approximately 1/8 the size of standard USB-B connectors
- Connector-to-connector polarization ensures proper mating
- Full shield provides EMI/RFI protection
- Meets USB 2.0 specifications
- Compact and lightweight design meets various portable and mobile equipment needs
- Rugged durability up to 5,000 cycles
- Other cable lengths and custom designs available

Reference Information

Product Specification: PS-87525
Packaging: Bag or custom-specified
Mates With: USB A, Mini AB and Mini B receptacle
Designed In: Millimeters

Electrical

Voltage: 30V
Current: 1.0A
Contact Resistance: 50 milliohms max.
Dielectric Withstanding Voltage: 100V AC/min.
Insulation Resistance: 100 Megohms min.

Mechanical

Mating Force: 35N max.
Unmating Force: 10N min.
Durability: USB A—1500 cycles
Mini A and Mini B—5000 cycles

Physical

Contact: Copper Alloy
Plating: Contact Area—0.75µm (30µ") min. Gold
Underplating: Nickel
Wire Gauge: 28 AWG
Operating Temperature: 0 to +50°C

Cable Assembly Lengths (mm)	Order No.	Description	Lead-free
800 White	88732-8510	USB A to Mini B, USB 1.1	Yes
800 Black	88732-8512		
1000 White	88732-8610		
1000 Black	88732-8612		
1500 White	88732-8710		
1500 Black	88732-8712		
1800 White	88732-8810		
1800 Black	88732-8812		
2000 White	88732-8910		
2000 Black	88732-8912		
800 White	88732-8500	USB A to Mini B, USB 2.0	Yes
800 Black	88732-8502		
1000 White	88732-8600		
1000 Black	88732-8602		
1500 White	88732-8700		
1500 Black	88732-8702		
1800 White	88732-8800		
1800 Black	88732-8802		
2000 White	88732-8900		
2000 Black	88732-8902		

Cable Assembly Lengths (mm)	Order No.	Description	Lead-free		
800 White	88753-8110	USB Mini A to Mini B, USB 1.1	Yes		
1000 White	88753-8210				
1200 White	88753-8310				
1500 White	88753-8410				
1800 White	88753-8510				
2000 White	88753-8610				
800 White	88753-8100			USB Mini A to Mini B, USB 2.0	Yes
800 Black	88753-8102				
1000 White	88753-8200				
1000 Black	88753-8202				
1200 White	88753-8300				
1200 Black	88753-8302				
1500 White	88753-8400				
1500 Black	88753-8402				
1800 White	88753-8500				
1800 Black	88753-8502				
2000 White	88753-8600				
2000 Black	88753-8602				

I/O Products

N

DMS-59™ Shielded I/O Cable Assembly

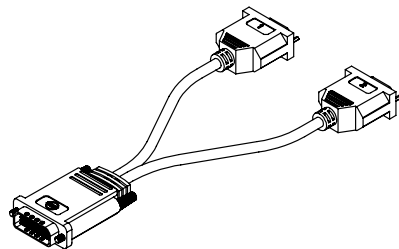
88759

DMS-59 To Dual VGA

DMS-59 To VGA/DVI Analog

DMS-59 To Dual DVI Analog

DMS-59 To Dual DVI Digital



Features and Benefits

- Keyed (void pin number 58) to ensure exclusive mating of receptacle with DMS-59 cable assemblies
- Proven LFH™ (Low Force Helix) high-cycle contact interface system for reliable system life
- Cable assemblies are available in a variety of lengths and configurations

Reference Information

Product Specification: PS-88768-5300
Packaging: Bag
Mates With: DMS-59 receptacle
Designed In: Millimeters

Electrical

Voltage: 30V
Current: 1.0A
Contact Resistance: 50 milliohms max.
Dielectric Withstanding Voltage: 500V DC
Insulation Resistance: 100 Megohms min.

Mechanical

Insertion Force: 53N max.
Withdraw Force: 22N min.
Durability: 5000 cycles

Physical

Housing: White glass-filled LCP, UL 94V-0
Contact: Copper Alloy
Plating: Contact Area—0.75µm (30µ") min. Gold
Underplating: Nickel
Wire Gauge: 30 AWG
Operating Temperature: 0 to +80°C

Cable Length (mm)	Order No.	Cable Assembly Description	Lead-free
200	88768-5200	DMS-59-Male to Two VGA-Female Cable Assembly	Yes
	88768-5300	DMS-59-Male to Two DVI-I-Female Cable Assembly	
	88768-5400	DMS-59-Male to VGA-Female + DVI-I-Female Cable Assembly	
2000	88768-5500	DMS-59-Male to Two DVI-D-Male Single Link Cable Assembly	Yes
3000	88768-5510		

